

Teledyne PDS Information Resources

(Ver1.0)

Documents, instruction movies and the PDS tweets on Twitter are available to help you working with Teledyne PDS. This document gives a collection of the available information resources and the best way to search in the documents.

Resource	Description	How to open
Teledyne PDS User manual	The User manual describes all features and utilities of Teledyne PDS.	
Product Manuals	A Product manual describes a Teledyne PDS application or utility in detail.	<p>All the manuals and documents are included in the Teledyne PDS installation and are accessible from the PDS Control Center Help menu. Alternatively, download the manuals from the Teledyne PDS website – Support page.</p> <p>http://www.teledyne-pds.com/support/download-manuals/</p>
Quick Reference Cards	A Quick Reference card is a small procedure or note about a certain action or feature.	
Sensor Setup Manuals	A Sensor Setup Manual describes sensor specific information related to Teledyne PDS.	
Technical Notes	A Technical Note gives background information about a topic.	
Online Help	The Online Help opens a HTML page. The online help file only includes the Product manuals.	Open in Teledyne PDS the Help menu or press the F1 button to open the Teledyne PDS online help files
Teledyne PDS instruction movies	Teledyne PDS instruction movies shows Teledyne PDS applications and setups.	<p>Teledyne PDS instruction movies are accessible from the Teledyne PDS website – Support page. Software training videos</p> <p>Alternatively, the Teledyne PDS YouTube channel. Find the Teledyne PDS YouTube channel here:</p>
Teledyne PDS on Twitter	On the Teledyne Twitter feed are latest PDS news and features announced.	<p>Open the latest tweets from Teledyne PDS.</p> <p>https://twitter.com/teledynepds</p>

The Teledyne PDS team is always interested in feedback to help us help you!

Searching for your subject of interests

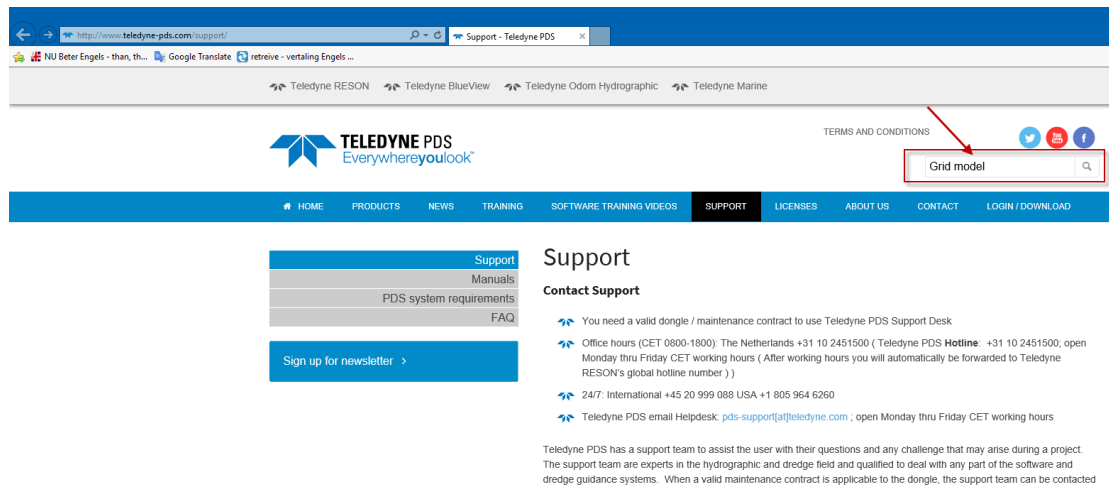
Some hints to find quickly your subject of interests:

1. When using the Teledyne PDS Support page.

The Website search will not search in the manuals or in the other PDS documents. It only search in the online Frequent Ask Question (FAQ) and in the other articles on the PDS Website

Browse to the Teledyne PDS support page. [Open the Teledyne PDS support page here](#)

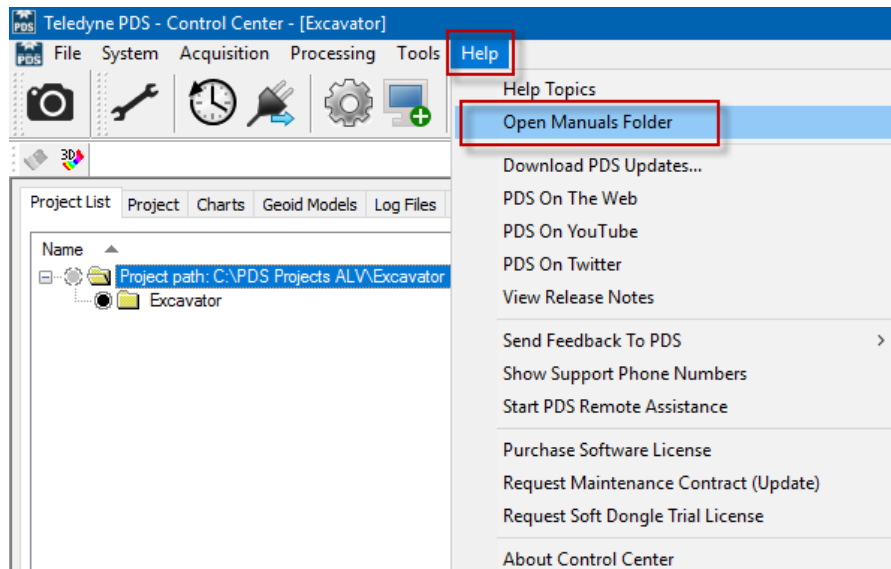
Enter the keyword you are looking for in the *Search* entry box.



2. When using the Teledyne PDS manuals folder in Windows Explorer.

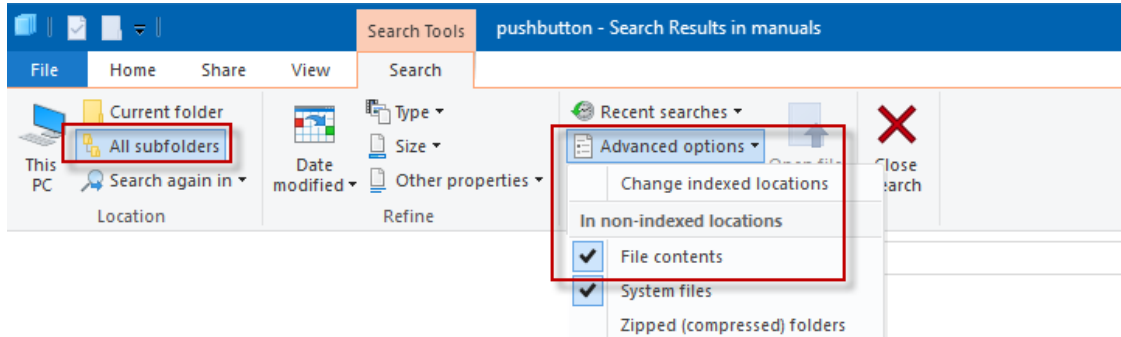
Use this method to search in all available documents.

Open the **Help** menu of the PDS Control Center and select the menu item **Open Manuals Folder**.

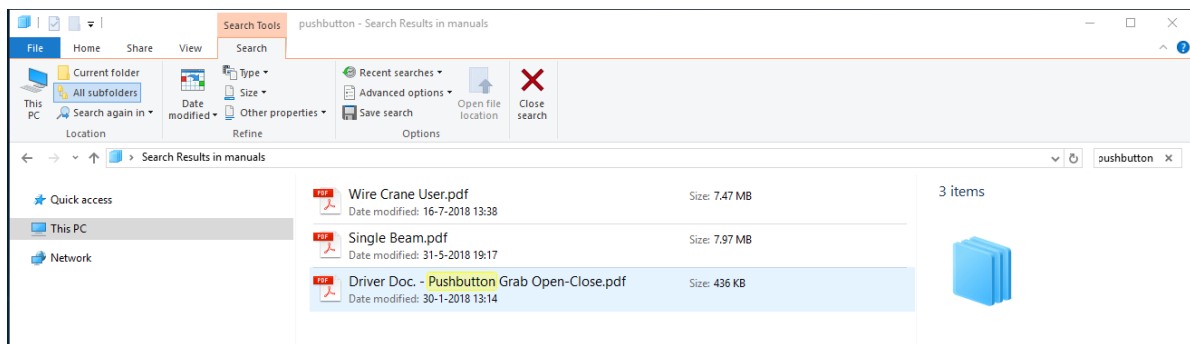


The Manuals folder opens. Enter the keyword you are looking for in the Search entry box.

Select the **All subfolders** item and select from the **Advanced options**, the **file contents** option to search in all the available documents.



For example, a search on the keyword 'pushbutton' gives search results for the driver document of the pushbutton, but also for the Wire Crane and Single beam manuals. All these manuals includes text about the pushbutton.



Open the document and used the Adobe find function to search in the document for the keyword you are looking for.

3. Using Online Help.

The Online Help only searches in the PDS Product manuals.

Press **F1** or open the **Help Topic** menu item of the **Help** menu to open the online Help.

Open the **Search** page and enter the keyword you are looking for.

