

Teledyne Marine

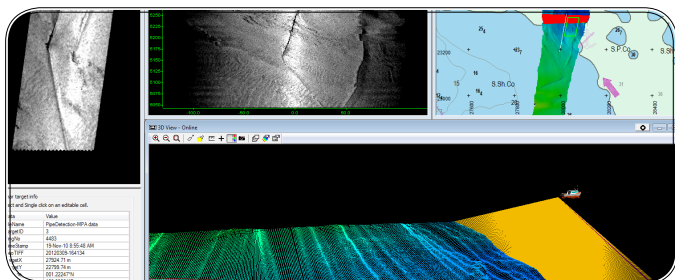
Teledyne PDS Multibeam Software Training (3 days)

Teledyne PDS software is widely used for multibeam data acquisition and processing. During this course you will learn how to interface sensors with Teledyne PDS and setup a surveying project from scratch. You will also learn how to customize your data collection to meet your standards. The patch test tool and important

data processing tools are discussed. This training gets you started from project setup to data acquisition and data processing. This training is suitable for new users or those that wish to brush up on certain parts. Specific topics or tailored training to match higher experience levels are available upon request.

Module descriptions

General	E.g.: Software installation; project setup; configuration and vessel setup; simulation tool; timing;
Data Acquisition	E.g.: Acquisition windows; runline editor; data collection;
Data Processing	E.g.: Patch test, grid modelling; introduction to CUBE, data cleaning and filters; GeoTIFFs; import/export
Specific Topics available upon request	E.g.: Pipe Detection and Tracking; water column data collection and visualization; ROV setup; USBL calibration; plotting; GeoCoder processing



WHERE

Teledyne RESON
 Stuttgartstraat 42-44
 3047 AS Rotterdam
 Netherlands

COST

3 day Teledyne PDS Multibeam Training €900

WHAT ELSE?

- Lunch included
- Computers, software and licenses provided

FOR BOOKING OR MORE INFO

Tel: +31 (0)10-245-1500
 Email: training@teledyne-reson.com